

ABOYTES MFG.

Abrasive Blasting Equipment & Dust Collectors

Made In The
U.S.A.

Suction Type Abrasive Blasting Cabinet System



Quality Built Abrasive
Blasting Systems

For High Production
or
Occasional projects

Used in the following Applications:

Removing:

Oxides, Heat treated Scales,
Carbon Deposits, Paint

Preparing:

Surface for painting , Plating

Cleaning:

Precision parts, Semiconductor parts,
Metal castings

Finishing:

Automotive, Arts and Crafts, Etching,
Glass, Removal of Scale

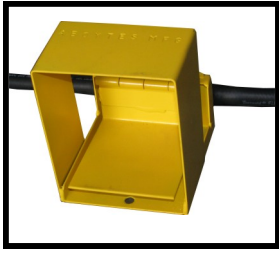
And Many More...

- No** Rivets
- No** Spot Welds
- No** Caulking Unions
- No** Shop/Barrel Vacuum
Dust Collector

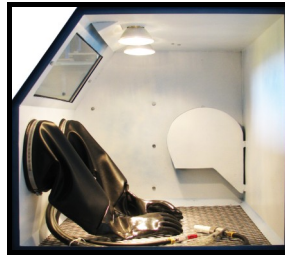
MODEL: ADS 36 - C

WWW.ABOYTESMFG.COM

ABOYTES MFG. 36 - C Series



High flow foot control valve & Safety guard



Clear visibility while blasting at all times



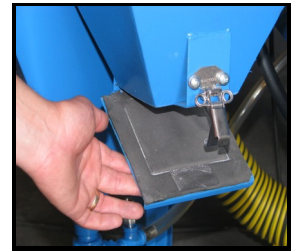
Powerful reverse flow blow-down system to clean filter Cartridge

Aboytes Mfg. 36-C Series Features :

- Fabricated with 14 gauge hot rolled steel , continuously welded
- Right side loading on standard models
- Full size door opening with abrasive spill proof
- Large window viewing area 25" X 11"
- Exterior laminate automobile safety glass
- Regular inside glass, easy to replace with safety clips
- High flow air regulator and valves
- Electrical toggle switch to control lights and motor
- Cartridge type dust control system w/ pneumatic reverse flow pulsing valve.

Heavy-Duty:

- Full length neoprene gloves and sleeves
- Brass foot control and safety guard
- Blasting gun assembly
- Expanded metal work bench



Quick waste removal lid on Dust Collector

Maintains 100% of its value over the years.

Aboytes Mfg. Reclaiming Systems are designed to keep abrasive media free of contaminants while minimizing media waste .

Suction Type Model	Work Area Dimensions	Floor Dimensions	Work Stations	Spot Lights	Dust Collector	Motor	Dust Collector CFM	Electrical	Filter Area Sq. Ft.	Shipping Weight
ADS 36-C	W: 36" D: 30" H: 30"	W: 58" D: 31" H: 75"	1	2	Cartridge Type	1/2 hp. 115/230 1 phase	450	1 phase 110 voltage 1 switch controls Lights/motor	54	*
ADS 48-C	W: 48" D: 30" H: 30"	W: 70" D: 31" H: 75"	1	2	Cartridge Type	1/2 hp. 115/230 1 phase	450	1 phase 110 voltage 1 switch controls Lights/motor	54	*

Suction Type Series Air Consumption

NOZZLE ORIFICE	AIR JET ORIFICE	AIR (PSI)	40	50	60	70	80	90	100
1/4"	1/8"	(CFM) Req.	12	15	17	19	21	23	26
3/8"	3/16"		26	30	35	40	45	49	54
1/2"	1/4"		45	53	60	67	74	81	87

This table is to be used as reference only.

Distributed By: